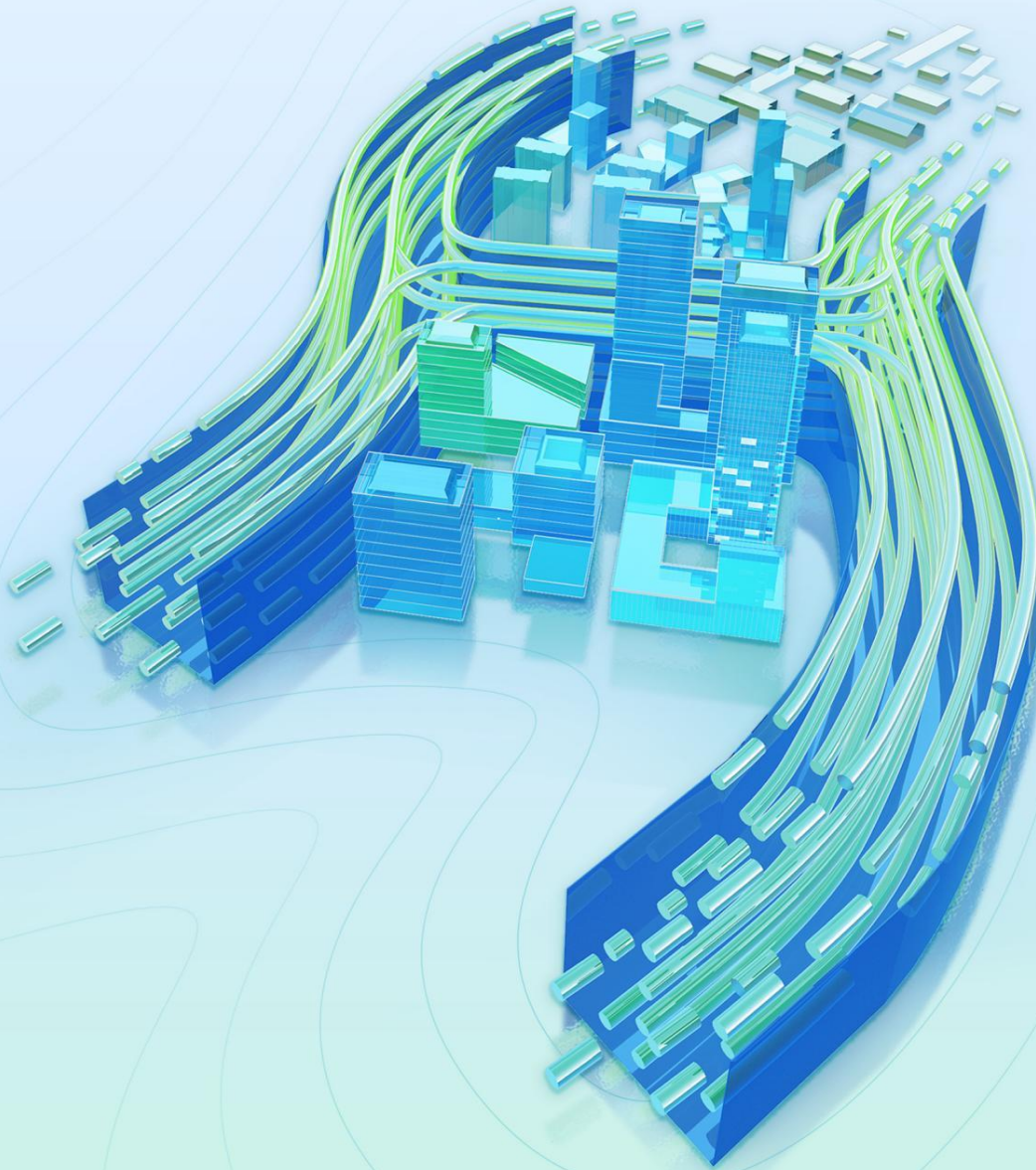




Library Resource Pack Installation Guide

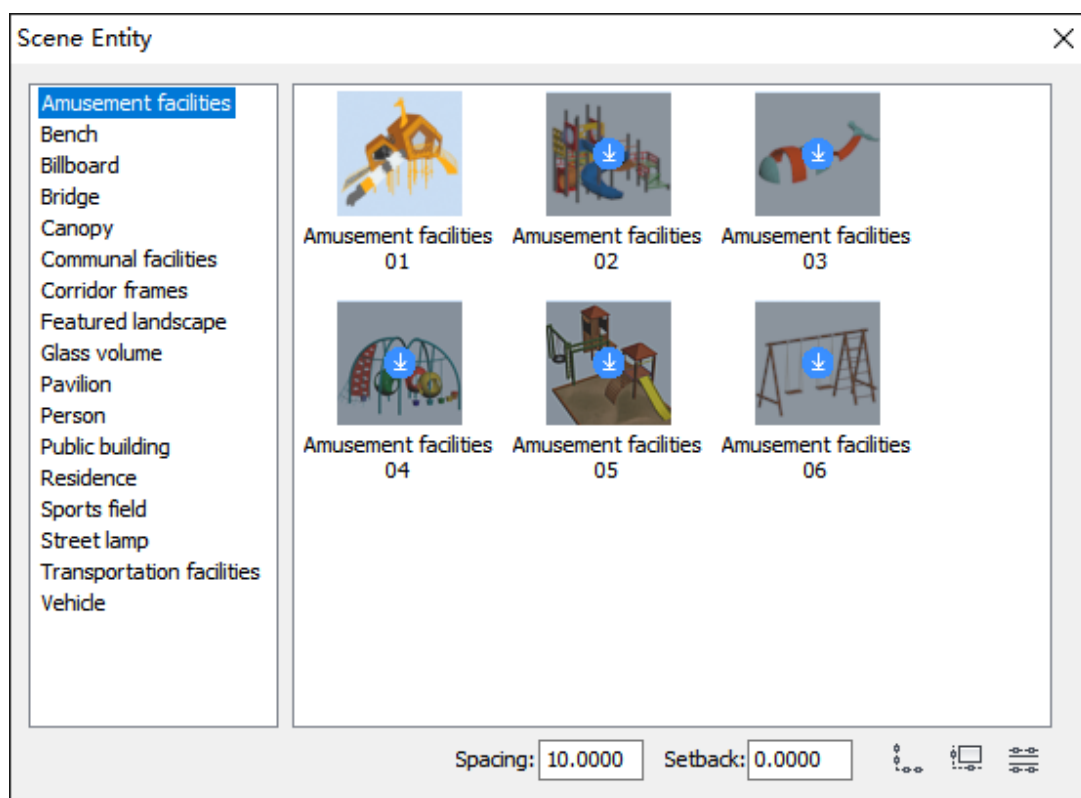
Houseplan 2.0



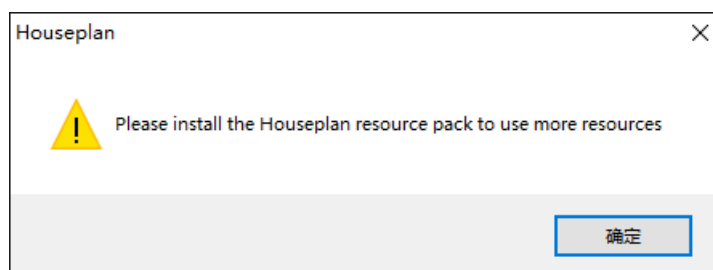
Houseplan 2.0 Library Resource Pack Installation Guide

1. Installation Description

When Houseplan 2.0 is installed on a computer connected to the Internet, the model entities of backgrounds, plants, and other types in the Houseplan 2.0 can be downloaded by double-clicking and used.



When Houseplan 2.0 is installed on a computer not connected to the Internet, the model entities of backgrounds, plants, and other types in the Houseplan 2.0 cannot be downloaded from the Internet. If you need to use these model entities, you need to install the resource pack.



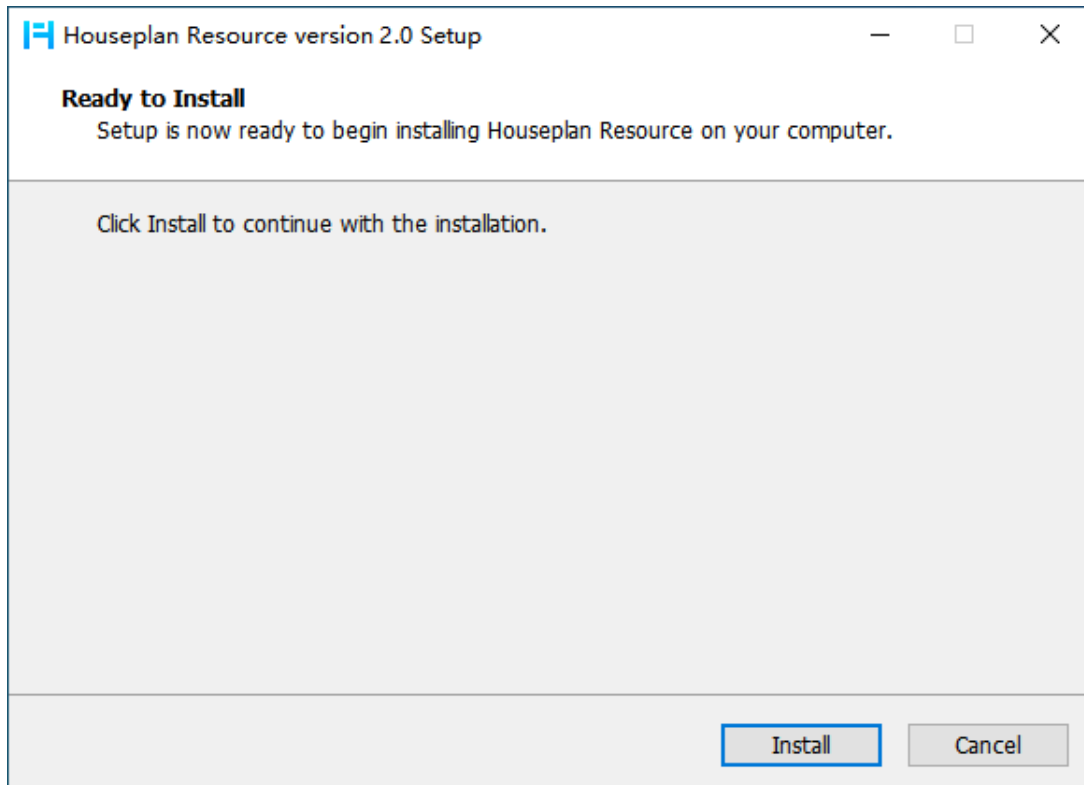
After installing the resource pack, all resources can be used without downloading.

2. Installation Instructions

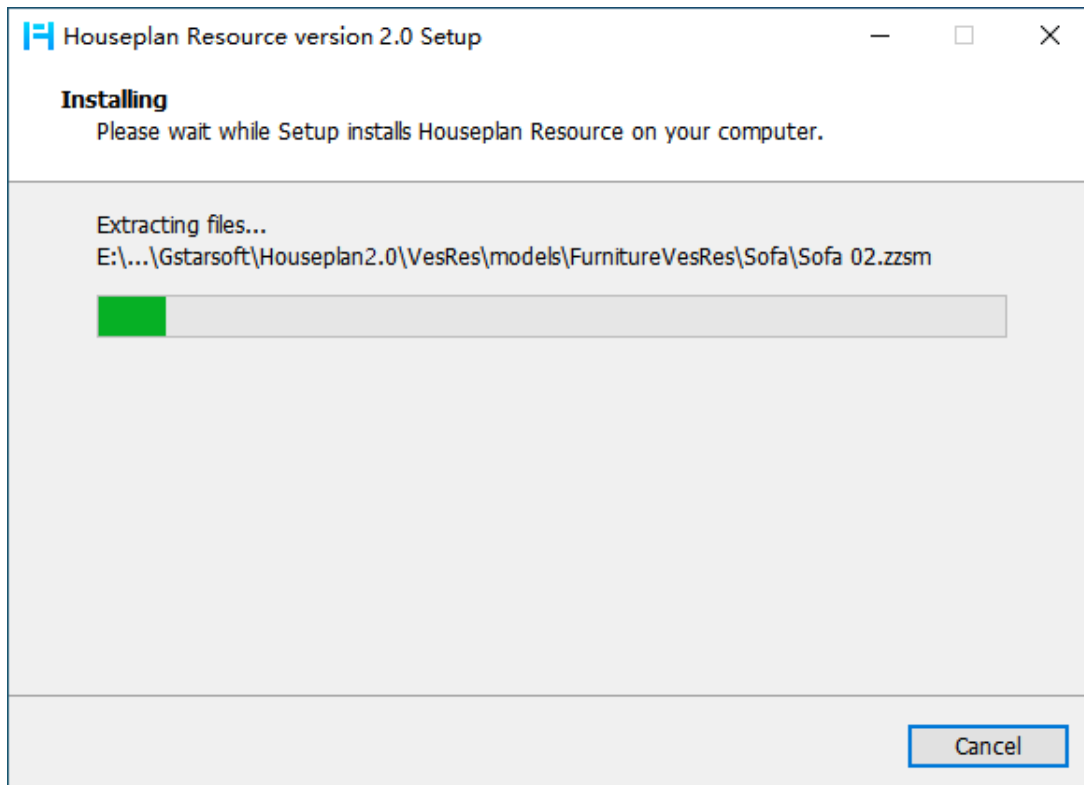
Users can visit <https://www.gstarcad.net/download/> to download the resource pack.

Before installation, please close the Houseplan 2.0 platform.

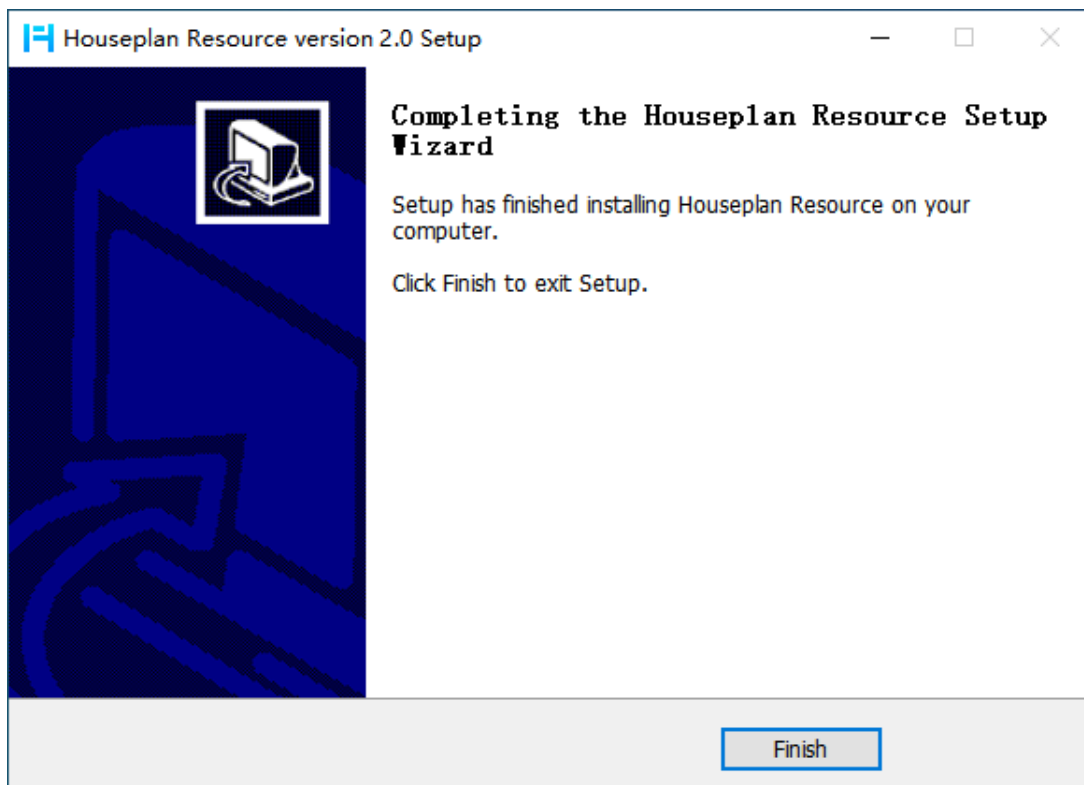
- 1) Double-click on the downloaded executable file to open the Resource Pack Installation Wizard dialog box.



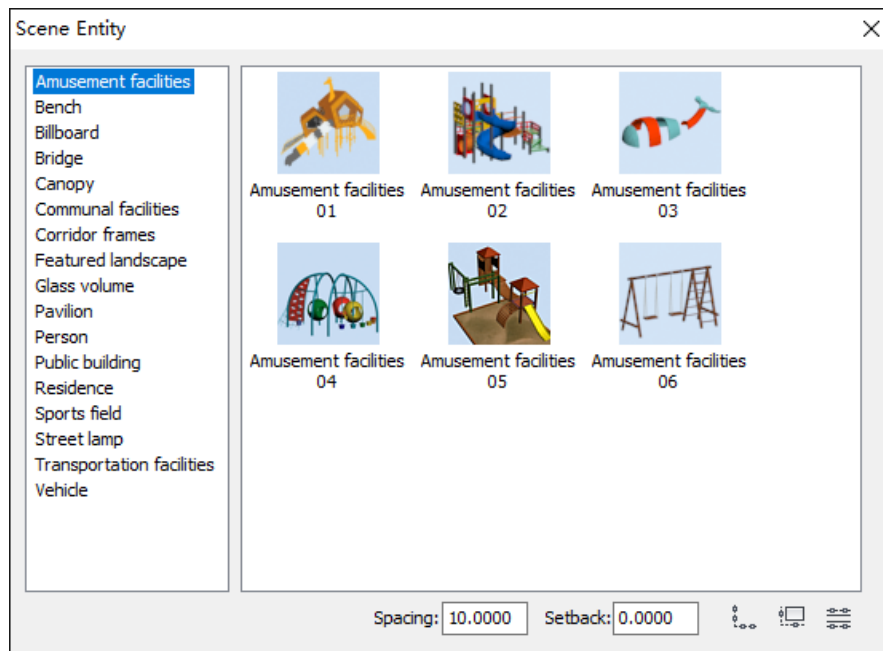
- 2) Click "Install" button to install the resource pack. It will be automatically installed in the installation path of Houseplan 2.0 platform without selecting an installation path.



3) Click "Finish" button to exit wizard. The resource pack has been successfully installed.

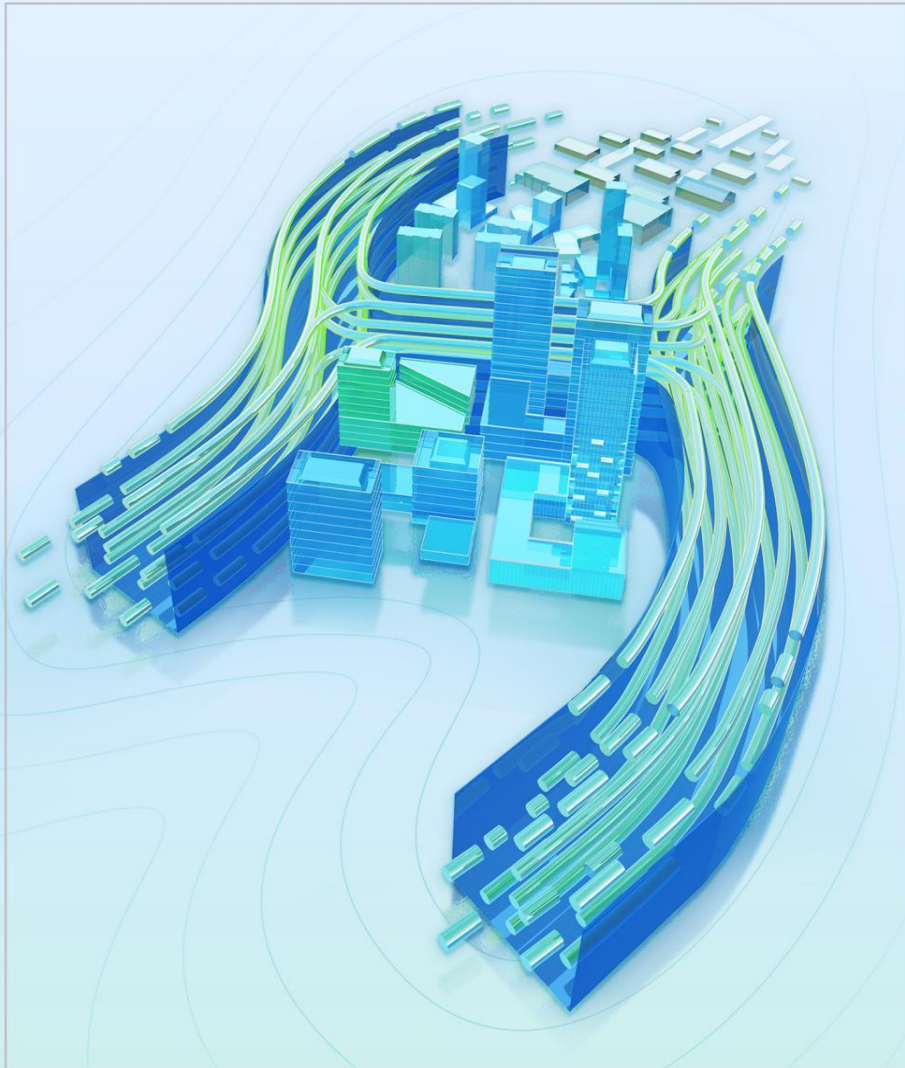


4) Use all resources in Houseplan 2.0 without downloading them.





Houseplan2.0



■ www.gstarcad.net/houseplan/